

# Our Design Principles

...Designed to reflect the world's best practice in sustainable urban design...

## Our Design Principles

The Eastern Village offers the opportunity to create a residential village, designed to reflect the world's best practice in sustainable urban design, and which relates to the surrounding Regional Park and open space areas.

### The Fundamentals

The four guiding principles upon which the community will be built are:

#### Sustainability

to deliver a desirable quality of life for the community, both now and in the future;

#### Balance

consideration of all competing inputs in decision making;

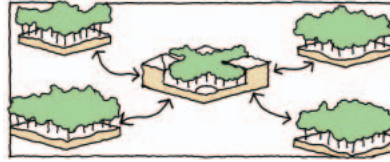
#### Place

to deliver a village that has a unique identity

#### Choice

to deliver lifestyle choices, for example in housing, learning, transport and recreation.

## Urban Design Principles



### Village Structure

The Eastern Village will be designed with an interconnected system of streets and open spaces, focused around a vibrant mixed-use village centre.



### Public Transport

The residents and businesses of the Eastern Village will be within a 5-minute walk of a bus stop with services connecting the community to the established transport systems serving the greater Sydney metropolitan area.



### Safe and Secure Place

The design of streets and open spaces will encourage safe and visible public open space areas.



### Housing Choice

A wide variety of housing opportunities will be provided to assist in the creation of a diverse community.



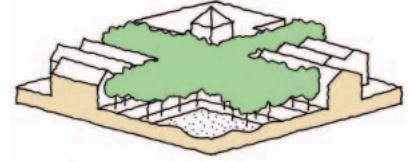
### Quality Streetscapes

Streetscapes will be developed as highly pedestrian-friendly environments. Streetscapes will include water sensitive design where possible, encourage the landscaping of front yards, and integrate existing trees, in addition to the provision of many new street trees.



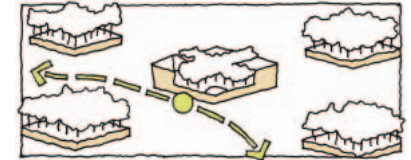
### Attention to Detail

The Eastern Village will need to consider the design detail of development, including streetscapes, open spaces and buildings to ensure the creation of a robust and dynamic environment.



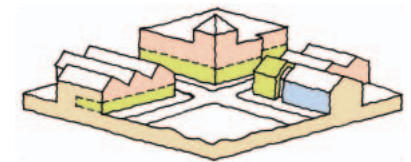
### Village Centre

The centre of the village will include some local retail and community facilities, as well as places for learning, working and living in a mixed-use environment.



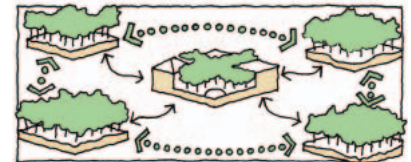
### Transit Corridor

A transit corridor has been reserved through the Eastern Village to accommodate the opportunity for future public transport needs.



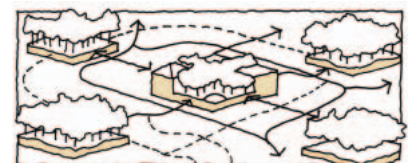
### Mixed Uses

The design of the village will encourage a mix of land uses, including areas of employment carefully integrated with residential and educational uses in selected locations.



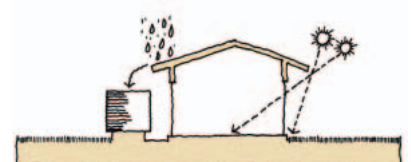
### Interconnected Open Space

An interconnected network of parks, with a high level of pedestrian accessibility, ensuring that no resident is more than five minutes walk from a quality open space.



### Road Network

A well-connected and easily understood street network will be designed.



### Energy and Water Efficient Design

The development of buildings and streetscapes will use best practice techniques for conserving the consumption of energy and water.